

BANGLADESH POWER DEVELOPMENT
SUMMARY OF COMMERCIAL OPERATION STATISTICS

APRIL, 2008

In the month of April '08, the net generation was 2,207.35 MKWh, sale of energy was 2065.03 MKWh and system loss of BPDB on net generation was 6.45% and BPDB's distribution loss (excluding Utilities) was 14.30%. Generation, Import, System loss, Bill, Collection, Consumer billed, C/B, C/I, C/G, Accounts receivable and activities of Magistrate Courts are summarized below:

1. GENERATION:

1.1 Energy Generation:

The Net energy generation (including IPP) during April '08 and March '08 were 2,207.35 and 2,189.91 MKWh respectively. It was observed that net energy generation of BPDB increased by 17.44 MKWh from previous month. Gross Energy Generation, Station Use, Net generation and Energy purchase from IPP are tabulated below:

Month / FY	BPDB			IPP	Total Net Generation (BPDB & IPP) (MKWh)
	Gross Generation (MKWh)	Station Use of BPDB (MKWh)	Net Generation (MKWh)	Net Generation (MKWh)	
APRIL '08	1408.85	90.53	1390.33	817.02	2207.35
MARCH '08	1463.88	91.02	1372.87	817.04	2189.91
FY 06-07	15,494.70	956.15	14,538.55	8,244.54	22,783.09
FY 07-08 (Upto April'08)	13,447.14	826.27	12,620.87	7,470.41	20,091.19

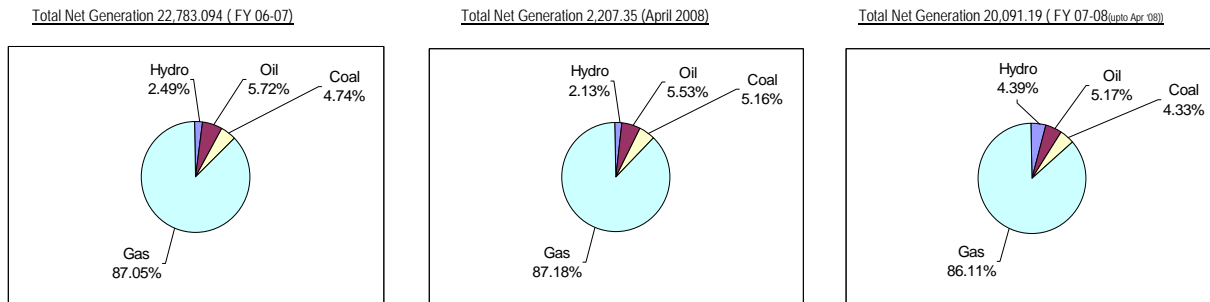
1.2 Maximum Generation, Demand and Load Shedding:

According to the Daily Data from Load Dispatch Center (LDC) maximum generation, maximum demand and maximum load shedding for the month of March 2008, April 2008 and FY 07-08 (upto April '08) are shown below:

Description	March ,2008		April ,2008		FY 07-08 (Upto April '08)	
	MW	Date	MW	Date	MW	Date
Maximum Generation	3953.6	26-03-08	3796.7	12-04-08	4130	17-09-07
Maximum Demand	4500	31-03-08	4700	23-04-08	4700	23-04-08
Maximum Load Shedding	835	31-03-08	972	24-04-08	972	24-04-08

1.3 Net Energy Generation by Fuel Type:

Net Energy generated by type of fuel for FY 06-07, April '08 & FY 07-08 (upto April '08) is shown below in graph:



2. ENERGY SALE AND SYSTEM LOSS:

2.1 Energy Sale :

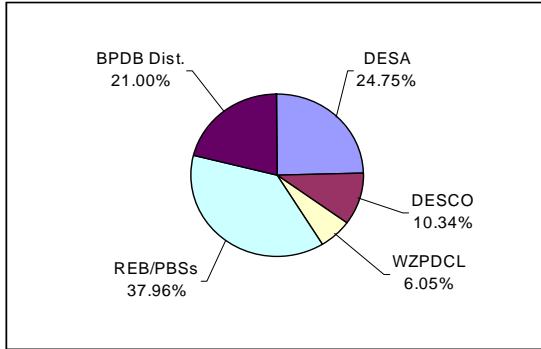
Total energy sale has increased by 26.01 MKWh from previous month. Bulk and retail energy sales of FY 05-06, FY 06-07, March, 2008, April, 2008 & FY 07-08 (upto April '08) is tabulated below:

Description	FY 2005 - 2006	FY 2006-2007	March, 2008	April, 2008	(Mkwh)
					FY 2007-2008 (Upto April '08)
DESA	5,314.720	5,242.995	447.129	454.913	4,271.088
DESCO	2,035.529	2,190.685	219.232	231.199	2,085.892
WZPDCL	1,372.783	1,281.945	113.616	119.419	1,115.322
REB/PBSs	8,064.968	8,039.958	847.700	832.140	7,274.370
BPDB Dist. (Zones + PS + GK)	4,174.338	4,425.553	411.344	427.353	3,963.751
Total Sale	20,962.337	21,181.137	2,039.020	2,065.028	18,710.417

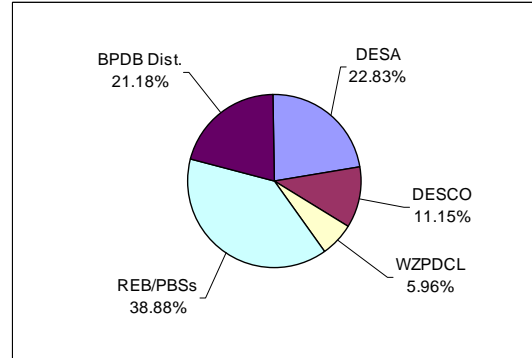
2.2 Utility wise energy sale:

Utility wise share of bulk sale of BPDB distribution zones, DESA, DESCO, WZPDCL and REB/PBSs for FY 06-07, April '08 and FY 07-08 (upto April '08) is shown below:

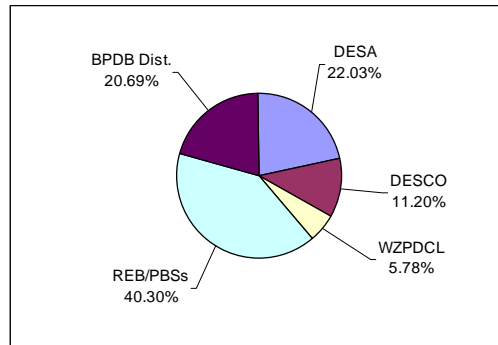
Utility wise Energy Sale : 21,181.137 (FY 06 – 07)



Utility wise Energy Sale : 18,710.417 [FY07-08(upto April '08)]



Utility wise Energy Sale : 2065.028 (April, 2008)



2.3 Energy Import, Sale and System Loss with Comparison:

BPDB zone wise energy import, energy sold, distribution System loss on import (including REB/PBSs) and transmission loss on net generation for FY 06-07, April '08 and FY 07-08 (upto April '08) are tabulated below:

BPDB's Zone / Utility	Energy Imported (MKWh)			Energy Sold (MKWh)			Dist. System Loss (%)		
	FY 06-07	April ,2008	FY 07-08 (upto April '08)	FY 06-07	April ,2008	FY 07-08 (upto April '08)	FY 06-07	April ,2008	FY 07-08 (upto April '08)
Dist. Mymensingh	4034.741	135.172	1132.036	3908.841	123.683	1029.197	3.12	8.50	9.08
Dist. Chittagong	2678.090	241.914	2380.716	2330.72	218.195	2124.861	12.97	9.80	10.75
Dist Comilla	1672.71	154.435	1326.479	1584.577	145.650	1256.631	5.27	5.69	5.27
Dist. Sylhet	901.792	79.243	816.719	814.794	72.032	743.807	9.65	9.10	8.93
Dist. Rangpur	957.599	119.858	943.136	880.312	113.088	882.970	8.07	5.65	6.38
Dist. Rajshahi	1965.967	235.002	1800.576	1812.432	221.734	1685.795	7.81	5.65	6.38
Power Station	8.831	0.782	7.116	8.290	0.735	6.708	6.12	5.99	5.74
GK Project	17.563	2.437	9.328	17.563	2.437	9.328	-	-	-
Dist. Total (Zones + PS + GK)	12,237.293	968.844	8416.107	11,357.529	897.556	7739.296	7.19	7.36	8.04

2.4 Energy Import, Sale and System Loss with Comparison Excluding Utilities:

BPDB's distribution system loss Excluding Utilities based on their energy import for FY 06-07, April '08 and FY 07-08 (upto April '08) are tabulated below :

BPDB's Zone / Utility	Energy Imported (MKWh)			Energy Sold (MKWh)			Dist. System Loss (%)		
	FY 06-07	April 2008	FY 07-08 (upto April '08)	FY 06-07	April 2008	FY 07-08 (upto Apr '08)	FY 06-07	April 2008	FY 07-08 (upto Apr '08)
BPDB Zones									
Dist. Mymensingh	630.995	64.430	565.78	505.094	52.942	462.94	19.95	17.83	18.18
Dist. Chittagong	2278.057	202.336	1975.02	1930.687	178.617	1719.16	15.25	11.72	12.95
Dist Comilla	570.192	57.225	502.64	482.058	48.440	432.79	15.46	15.35	13.90
Dist. Sylhet	472.637	41.766	414.71	385.639	34.555	341.80	18.41	17.27	17.58
Dist. Rangpur	478.676	47.799	436.86	401.389	41.029	376.69	16.15	14.16	13.77
Dist. Rajshahi	848.366	81.866	729.11	694.831	68.599	614.33	18.10	16.21	15.74
Power Station	8.831	0.782	7.12	8.290	0.735	6.71	6.12	5.99	5.73
GK Project	17.563	2.437	9.33	17.563	2.437	9.33	-	-	-
Total (Zones + PS + GK)	5,305.317	498.641	4640.56	4,425.553	427.353	3963.75	16.58	14.30	14.58

3. BILLED, COLLECTION AMOUNT & C/B RATIO WITH COMPARISON:

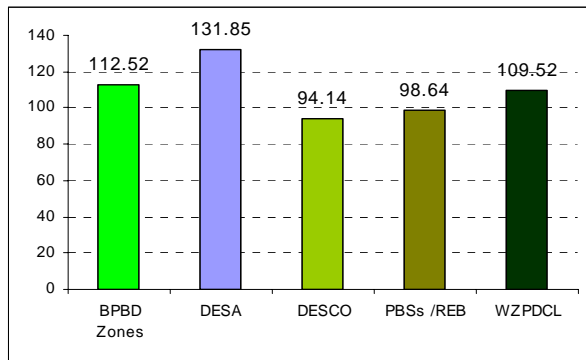
3.1 BPDB's Bill, Collection, Collection/Bill ratio, Collection/Import ratio and net collection/net generation ratio for FY 06-07, April '08 and FY 07-08 (upto April '08) are shown below:

BPDB's Zone/Utility	Net Billed Amt (MTk)				Net Collected Amt (MTk)				Coll/Bill (%)			
	FY 06-07	March, 2008	April, 2008	FY 07-08 (upto Apr '08)	FY 06-07	March, 2008	April, 2008	FY 07-08 (upto Apr '08)	FY 06-07	March, 2008	April, 2008	FY 07-08 (upto Apr '08)
BPBD Dist. (zones + PS + GK)	15,352.28	1445.92	1497.13	14147.24	17,274.63	1289.16	1393.81	13759.65	112.51	89.16	93.10	97.26
DESA	10314.72	944.87	961.32	9104.77	13,600.00	800.00	1000.00	9550.00	131.85	84.67	104.02	104.89
DESCO	4442.78	473.74	499.60	4507.40	4,182.49	370.54	350.10	4550.59	94.14	78.22	70.08	100.96
PBSs /REB	15,120.33	1628.69	1598.96	14082.72	1,4914.76	1458.57	1516.15	13813.92	98.64	89.56	94.82	98.09
WZPDCL	2,581.148	245.51	258.05	2410.10	2,826.75	221.41	209.24	2380.30	109.52	90.18	81.08	98.76
Total	47,811.27	4,738.73	4815.06	44252.24	5,2798.63	4,139.69	4469.31	44054.43	110.43	87.36	92.82	99.55

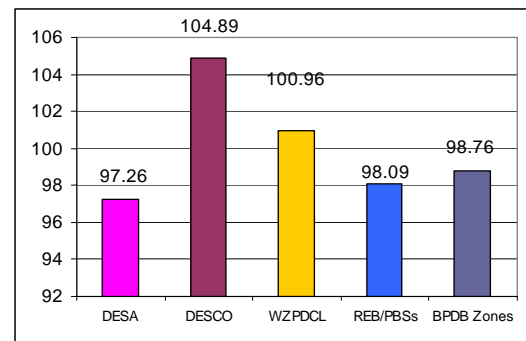
C/G ratio for FY 06-07, April '08 and FY 07-08 (upto April '08) are 102.67%, 86.83% and 92.71% respectively.

Utility Wise C/B and BPDB Zone's C/I ratios in Graph:

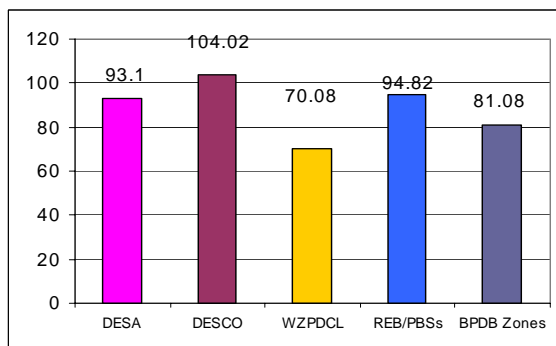
Utility wise C/B (FY 06 - 07)



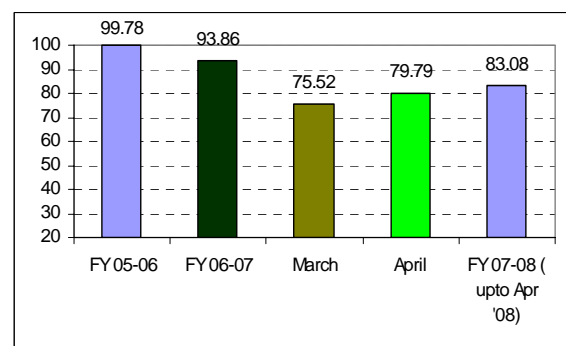
Utility wise C/B [FY 07-08 (upto April '08)]



Utility wise C/B (April, 2008)



BPDB Zone's C/I (FY 05-06, FY 06-07, Mar '08, Apr '08 & FY 07-08(upto Apr'08))



3.2 BPDB zones wise (including REB) Net Bill, Net Collection, Collection/Bill ratio and collection/Import ratio are shown below:

BPDB Zones	Net Billed Amt (Mtk)			Net Collected Amt (Mtk)			Coll/Bill (%)			C/I Ratio (%)		
	FY 06-07	April, 2008	FY 07-08 (upto Apr '08)	FY 06-07	April, 2008	FY 07-08 (upto Apr '08)	FY 06-07	April, 2008	FY 07-08 (upto Apr '08)	FY 06-07	April, 2008	FY 07-08 (upto Apr '08)
DIST MYMENSING	8,285.87	296.16	2,584.50	8,570.58	280.27	2,664.59	103.44	94.63	103.10	100.21	86.59	93.73
DIST CHITTAGONG	7,582.79	722.82	7,040.10	8,193.11	736.58	6,835.58	108.05	101.90	97.09	94.03	91.91	86.66
DIST COMILLA	3,696.61	351.33	3,054.07	3,996.27	310.63	3,022.30	108.11	88.42	98.96	102.41	83.39	93.75
DIST SYLHET	2,122.76	198.36	2,026.50	2,280.07	185.62	2,033.46	107.41	93.58	100.34	97.05	85.06	91.39
DIST RANGPUR	2,244.57	269.68	2,241.88	2,526.06	266.13	2,158.96	112.54	98.68	96.30	103.46	93.11	90.16
DIST RAJSHAHI	4,417.08	514.05	4,103.11	4,825.33	479.79	3,913.30	109.24	93.33	95.37	100.71	88.06	89.29
Zone Total:	26,437.15	2,352.39	21,050.17	30,497.92	2,259.01	21,117.52	107.25	96.03	100.32	99.54	88.95	92.24

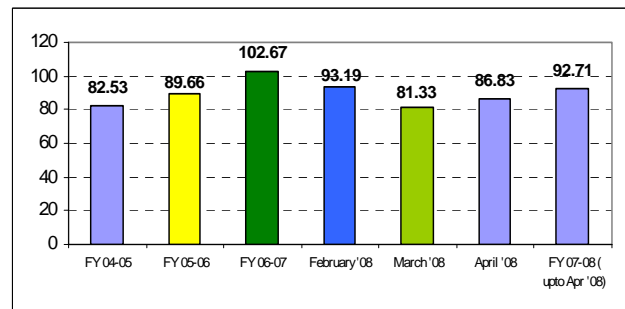
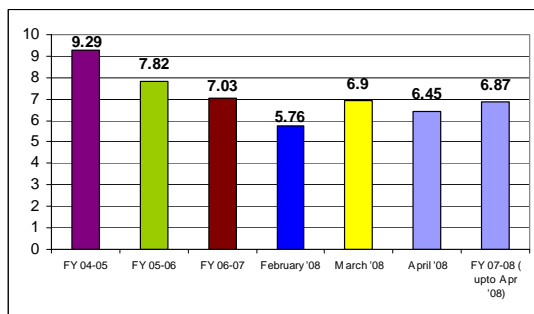
3.3 BPDB zonewise (excl. REB) Net Bill, Net Collection, Collection / Bill ratio and Collection / import ratio are tabulated below:

BPDB Zones	Net Billed Amt (Mtk)			Net Collected Amt (Mtk)			Coll/Bill (%)			C/I Ratio (%)		
	FY 06-07	April, 2008	FY 07-08 (upto April '08)	FY 06-07	April, 2008	FY 07-08 (upto April '08)	FY 06-07	April, 2008	FY 07-08 (upto April '08)	FY 06-07	April, 2008	FY 07-08 (upto April '08)
DIST MYMENSING	1,662.86	167.21	1552.76	1,896.67	139.93	1458.20	114.18	83.69	93.91	91.40	68.76	76.84
DIST CHITTAGONG	6,856.17	650.84	6,299.54	7,467.11	651.10	6,098.82	108.91	100.04	96.81	92.30	88.31	84.27
DIST COMILLA	1,655.22	169.42	1516.66	1,889.58	138.42	1483.88	114.16	81.70	97.84	96.51	69.16	84.24
DIST SYLHET	1,341.25	126.48	1248.80	1,506.04	116.38	1260.51	112.29	92.02	100.94	91.62	76.13	83.19
DIST RANGPUR	1,372.31	138.46	1319.97	1,646.84	130.24	1289.23	120.00	94.07	97.67	100.63	80.75	84.22
DIST RAJSHAHI	2,377.02	234.65	2151.87	2,759.87	215.02	2111.89	116.11	91.64	98.14	95.09	76.78	82.69
Zone Total:	15,264.82	1,487.05	14,089.60	17,166.12	1,391.09	13,702.53	112.46	93.10	97.26	93.86	79.79	83.08

4. SYSTEM LOSS AND COLLECTION TO NET GENERATION RATIO WITH COMPARISON:

BPDB's System loss and Collection to net generation ratio of FY 04-05, FY 05-06, FY 06-07, Jan '08, Mar'08, Apr '08 and FY 07-08 (upto Apr '08) are shown in bar graph as below:

System Loss Pattern (FY 04-05, FY 05-06, FY 06-07, Jan '08, Feb'08, Mar'08 & FY 07-08 (upto Mar '08)) Collection to Net Generation (FY 04-05, FY 05-06, FY 06-07, Jan '08, Mar'08, Apr'08 & FY 07-08 (upto Apr 08 '08))



5. CONSUMER BILLED IN BPDB ZONES :

Number of active consumer in the month of April, 2008 was 17,02,119 and consumer billed was 100.00 % compared to 100.00% in the previous month.

6. COLLECTION TO NET GENERATION RATIO (C/G):

Net Collection to Net Generation ratio during the month of April '08 was 86.83% compared to 81.34% in the previous month and 109.31% in April '07. C/G ratio increased by 5.49 percentage point from previous month and also decreased by 22.48 percentage point from the same month of the previous year.

7. ACCOUNTS RECEIVABLE / OUTSTANDING BILL:

The Accounts receivable (Principle Amount) at the end of the April '08 was Tk. 39,921.17 Million (equivalent to 9.02 months). Accounts receivable (Principle Amount) from DESA was Tk. 31,683.55 Million (equivalent to 34.80 months). If DESA had paid electricity bill regularly, the accounts receivable would have been equivalent to 2.02 months only. The outstanding bill (excluding bills which were not due) as of April '08 was Tk. 32,729.92 Million (equivalent to 7.40 months).

8. DISCONNECTION OF ILLEGAL USERS AND ACTIVITIES OF MAGISTRATE COURTS:

Only one mobile court has been held during the month. No illegal user has been jailed, none has been fined and none was jailed and fined. 538 cases have been finalized out of 49,438 balances at the end of the previous month. As of April, 2008 total 7,145 numbers of defaulting consumer have been disconnected with outstanding of TK. 53.796 million. Among them 2,782 numbers have been reconnected and TK. 50.476 million have been realized.

(MD. DELWAR HOSSAIN)
General Manager
Commercial Operation
BPDB, Dhaka